

[View this email in your browser](#)



KETGATE

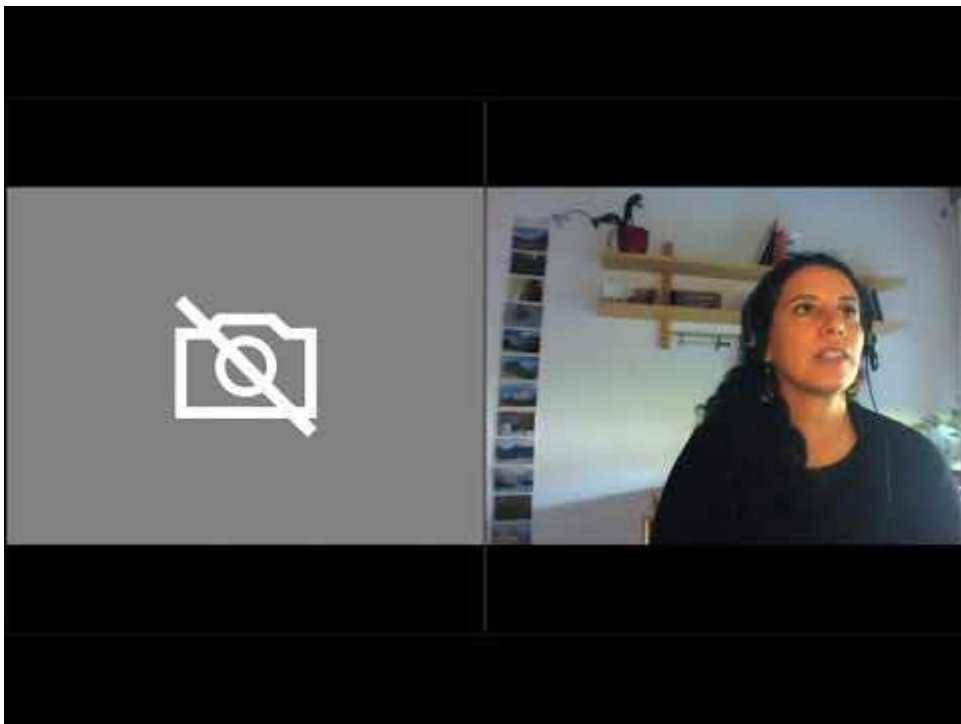
10th KETGATE Newsletter

**CE1188 Central European SME Gateway to Key-enabling technology
infrastructures - sparking a new transnational KET Innovation Ecosystem**

Project Aim

Enabling a Central Europe - wide access to highly competent KET
technology and infrastructure services for SMEs irrespective of their
location

PROJECT NEWS



OFFICIAL LAUNCH OF THE KETGATE NETWORK AND PRESS CONFERENCE

We have been busy since our KETGATE Brokerage Event in May! The project partners have launched calls for #SMEs interested in transnational #technology #transfer projects with Research and Technology Organisations (RTOs) of Central Europe and are accepting applications until August 15th! In case you need a little „mind support“ and want to hear in a nutshell what benefits KETGATE brings for SMEs, RTOs and technology transfer, please have a look at our recording of the KETGATE network launch: <https://lnkd.in/dA3wkYP!>

(KETGATE YOUTUBE CHANNEL)



ROUNDTABLES WITH REGIONAL POLICY AND RELEVANT STAKEHOLDERS

On the 19th of June our Leader the Steinbeis Europa Zentrum was responsible for the organization of the workshops with representatives of research institutions, ministries, R&D support institutions, clusters, and other relevant partners. The main goal of the event was targeted transfer of project insights to personnel at regional policymakers and funding experts with a role in defining framework conditions in the regional innovation system.

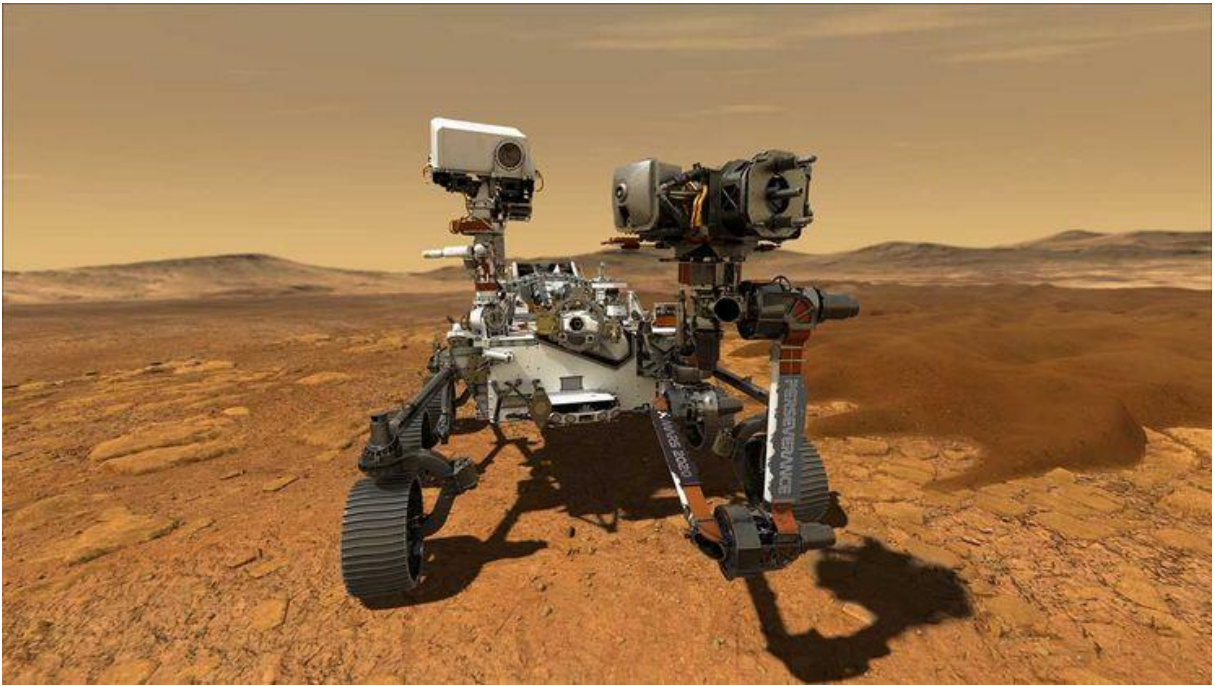
[\(READ MORE\)](#)



THE JOANNEUM RESEARCH ENABLES CHALLENGING QUALITY ASSURANCE IN THE PHARMACEUTICAL SECTOR

The Institute DIGITAL of JOANNEUM RESEARCH contributes with innovative optical sensor system to automate complex measurement tasks in quality assurance and thus to increase production efficiency. Pharmaceutical products of the highest quality and availability are a cornerstone of modern healthcare systems. In Austria alone, the pharmaceutical industry, with 18,000 employees in 150 companies, generates an annual turnover of € 9.6 billion.

[\(READ MORE\)](#)



NASA MARS ROVER "PERSEVERANCE" LAUNCHED INTO SPACE

The unmanned Mars Rover “Perseverance” weighs 1000 kilograms and is part of NASA's Mars Exploration Program. It will investigate the geological processes, climate and geological history of the planet. Perseverance carries seven scientific instruments and a 1.8-kilogram helicopter drone for first flights in the thin Martian atmosphere. Find out what was the role of JOANNEUM RESEARCH in this project...

[\(READ MORE\)](#)

MEET THE BUSINESS SUPPORT ORGANISATIONS



STEINBEIS-EUROPA-ZENTRUM (SEZ)

SEZ is working as Innovation Agency since 25 years, supporting SME in trans technology transfer and access to technol. services. SEZ has developed tools like the innovation audit & workshops for enhancing innovation management capacities in SME, with the aim to guide them towards suitable strategic innovation partnerships. As EEN partner SEZ is in charge of innovation support services in Baden-Württemberg; as Key Account Manager SEZ supports SME beneficiaries from the SME Instrument funding (H2020) in innovation capacity building. SEZ lead the CE strategic project on new cluster policies (CluStrat) & developed new policy measures towards emerging industries like health, transport + green economy. Several SEZ H2020 projects deal with access of SME to KETs, such as Photonics4all, RESPICESME, CPSlab. SEZ was main contractor for DG GROW to develop the idea of techn. infrastructures & a pan-European Access for SME to techn. services for key enabling technologies. The inventory of KET TI was developed by SEZ, now published on the DG Grow website, as well as the relevant Action Plan for KET Infrastructure services to SME. A pilot study visit among 5 KET TI was organised, in which relevant tools

+ necessary developments were identified. All those results are now used for KETGATE. SEZ belongs to the not for profit SIG, but also performs economic activities on the market in the area of proposal writing for EU funding and offers training certificates in coop. with Steinbeis University.

[\(VISIT THE WEBSITE\)](#)

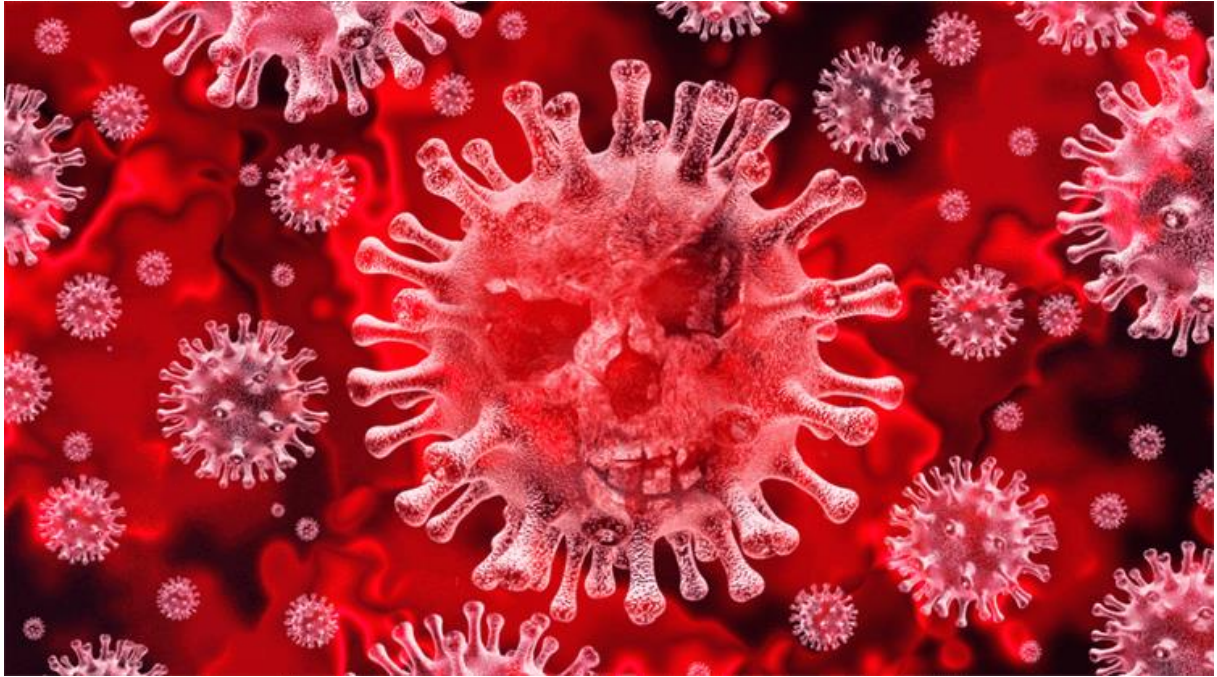
FAVOURITE READS ON KETS



PHOTONICS PROCESSOR AIMED AT AI INTERFERENCE

Silicon photonics is exhibiting greater innovation as requirements grow to enable faster, lower-power chip interconnects for traditionally power-hungry applications like AI inferencing.

[\(READ MORE\)](#)



NANOTECHNOLOGY AND THE FIGHT AGAINST COVID-19

As the quest for a COVID-19 vaccine continues, researchers working in other areas of science such as nanotechnology have joined the battle against the virus. In addition to being responsible for hundreds of thousands of deaths, the COVID-19 crisis has mobilized the scientific community in a way that no other situation has before. Multiple disciplines are currently researching the virus, whether this be developing diagnosis and treatment methods, or a modality to slow its spread

[\(READ MORE\)](#)



RECOMMENDED EVENTS



B2B-MEETINGS AT INTERNATIONAL FORUM MECHATRONICS 2020

Technical progress requires new concepts to master industrial and strategic challenges - Symbiotic mechatronics as a new paradigm

The B2B-Meetings are an important part of the conference "International Forum Mechatronics". The scheduled face-to-face meetings offer an ideal opportunity to identify potential cooperation partners and to establish interesting business contacts. Every participant selects his conversation partners individually and has 20 minutes to exchange about their projects and products.

[JOIN THE EVENT](#)

[FOLLOW US ON LINKEDIN AND STAY INFORMED](#)

PROJECT DURATION: 01.07.2017 - 31.08.2020

PROJECT BUDGET: 2,02 mln €

ERDF CO-FINANCING: 1,66 mln €



Copyright © 2019

Our mailing address is:

ketgate@gapr.pl

Want to change how you receive these emails?
You can [update your preferences](#) or [unsubscribe from this list](#).

This email was sent to [<< Test Email Address >>](#)
[why did I get this?](#) [unsubscribe from this list](#) [update subscription preferences](#)
Steinbeis-Europa-Zentrum/Steinbeis 2i GmbH · Kienestraße 35 · Stuttgart D - 70174 · Germany



